

eyesight.sg recycle and save initiative

RECYCLE YOUR CONTACT LENS BLISTERS

Do your part in saving the planet.



JOIN US IN RECYCLING YOUR CONTACT LENS BLISTERS!

WHY

Standard recycling doesn't work

908,600 tonnes of plastic waste disposed in Singapore, and contact lens packaging is a contributor to this

Contact lens packaging that is not disposed of properly, break down into micro-plastics and enter our ecosystem and food supply.

When you order, we will send you a ziplock bag. Drop off the bag-full and be rewarded!

EYESIGHT.SG



Welcome to eyesight.sg contact lens blister recycling promotion

1. Reuse your old ziplock bag/ request a new one via WhatsApp
2. Empty the solution and separate the foil from the blister (ziplock bag of 60)
3. Pass to our friendly optometrists and save \$5 off your purchase
5. Save the environment
6. Tell your friends and ask them to join you!

enquiry@eyesight.sg

6781 2388 / 9824 1607
827 Tampines Street 81
#01-146 Singapore 520827

6288 2013 / 8809 5336
148 Potong Pasir Ave 1
#01-51 Singapore 350148

6792 5733 / 8851 3862
West Mall Shopping Centre
1 Bt Batok Central
#04-05 Singapore 658713

Guide for Contact Lens Order

1. **WHATSAPP** your orders and photos of your contact lens prescription (if any) to us.
2. After confirming your order, please make your payment via **Paynow** at **UEN 201826206C** so that we can proceed with your order.
3. The lenses will reach us in 2-3 business days. We will WhatsApp you again to make an appointment for a **mandatory eye health check*** before we dispense the lenses.

*6-monthly eye check

Eyesight.sg Potong Pasir
WhatsApp business account



Press or scan me to speak
to our friendly optometrists!

Exchange Policy

1. Any **exchange** of contact lenses (only for lenses bought in Singapore, unopened boxes and expiry date of more than 6 months) can be done at either one of our eyesight.sg outlets.
2. We provide contact lens after-care examination, after-sales service and prescription check at no cost. Please **WhatsApp** us at +65 8809 5996 to make an appointment.

OUR PROMISE

We strive for 100% satisfaction for all purchases at eyesight.sg.

Our open-box exchange policy help you with any form of exchange, purchased from our practice, including opened/worn/power changed/discomfort when worn.

URP: Usual Retail Price
CR: Corporate Rate

ALCON

Daily Disposables (30 pc per box)



Dailies Total 1
URP: \$80
CR: \$65



Dailies Total 1 for Astigmatism
URP: \$87
CR: \$72



Dailies Total 1 Multifocal
URP: \$106
CR: \$88



PRECISION1
URP: \$62
CR: \$49



PRECISION1 for Astigmatism
URP: \$72
CR: \$62

Monthly Disposables



Air Optix HydraGlyde (6pcs)
URP: \$69
CR: \$57



Air Optix Toric (3pcs)
URP: \$77
CR: \$52



Air Optix Aqua Multifocal (3pcs)
URP: \$92
CR: \$74

URP: Usual Retail Price
CR: Corporate Rate

BAUSCH & LOMB

Daily Disposables (30 pc per box)



Soflens Daily Disposable
URP: \$52
CR: \$39



Soflens Daily Disposable Toric
URP: \$69
CR: \$56



ULTRA One Day
URP: \$78
CR: \$60



Biotrue ONEday
URP: \$62
CR: \$47



Biotrue ONEday for Presbyopia
URP: \$92
CR: \$77

Daily Disposables (30 pc per box)



Grace daily series:
Crystal Brown / Twinkle Brown
/ Sparkling Black / Glittering
Gray / Shimmering Gold



Iconic series:
Dear Brown / Bambi Brown /
Mellow Brown



Infinity series:
Aurora Black / Merry Mocha /
Freedom Honey

Bausch & Lomb LACELLE
URP: \$67
CR: \$50

Monthly Disposables



Soflens 38
URP: \$46
CR: \$40



Soflens Toric for Astigmatism
URP: \$105
CR: \$88



Soflens Multifocal
URP: \$162
CR: \$134



ULTRA
URP: \$74
CR: \$58



ULTRA for Astigmatism
URP: \$132
CR: \$123



ULTRA for Presbyopia
URP: \$180
CR: \$132

URP: Usual Retail Price
CR: Corporate Rate

COOPER VISION

Daily Disposables (30 pc per box)



MyDay
URP: \$73
CR: \$57



MyDay toric
URP: \$79
CR: \$61



Proclear 1 day Multifocal
URP: \$95
CR: \$74



Clariti 1 day
URP: \$55
CR: \$43



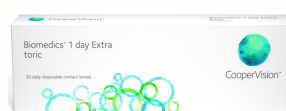
Clariti 1 day Toric
URP: \$60
CR: \$47



Clariti 1 day Multifocal
URP: \$70
CR: \$55



Biomedics 1 day Extra
URP: \$46
CR: \$30



Biomedics 1 day Extra toric
URP: \$64
CR: \$40



Proclear 1 day
URP: \$62
CR: \$45



Proclear 1 day Multifocal
URP: \$82
CR: \$65

Monthly Disposables



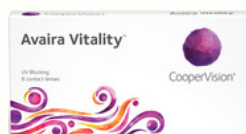
Biofinity
URP: \$65
CR: \$53



Biofinity Toric
URP: \$125
CR: \$100



Biofinity Multifocal
URP: \$165
CR: \$135



Avaira Vitality
URP: \$55
CR: \$43



Proclear Multifocal
URP: \$165
CR: \$125



Biomedics 55 Evolution
URP: \$40
CR: \$28



Biomedics Toric
URP: \$90
CR: \$75

URP: Usual Retail Price
CR: Corporate Rate

JOHNSON & JOHNSON

Daily Disposables (30 pc per box)



1-day Acuvue Moist
URP: \$61
CR: \$49



1-day Acuvue Moist Toric
URP: \$78
CR: \$62



1-day Acuvue Multifocal
URP: \$94
CR: \$76



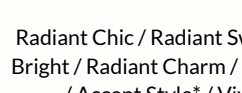
1-day Acuvue Oasis
URP: \$78
CR: \$63



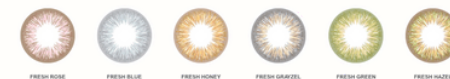
1-day Acuvue Oasis Toric
URP: \$96
CR: \$77

Daily Disposables (30 pc per box)

1-day Acuvue Define / Define Fresh



Radiant Chic / Radiant Sweet / Radiant Bright / Radiant Charm / Natural Shine* / Accent Style* / Vivid Style*



Fresh Grayzel / Fresh Green / Fresh Hazel / Fresh Rose* / Fresh Blue / Fresh Honey*

URP: \$72
CR: \$58

NEW

Biweekly Disposables (6 pc per box)



Acuvue Oasis
URP: \$61
CR: \$50



Acuvue Oasis Toric
URP: \$78
CR: \$62

Monthly Disposables (6 pc per box)



Acuvue Vita
URP: \$71
CR: \$63



Acuvue Vita Toric
URP: \$103
CR: \$92

*Trial lenses are not available for these products.

MAXIM

URP: Usual Retail Price
CR: Corporate Rate

Daily Disposables (30 pc per box)



Maxim 1-day
Chocolate / Brownie / Black Berry / Smoky Gray / Honey

URP: \$60
CR: \$48



Monthly Disposables (2 pc per box)



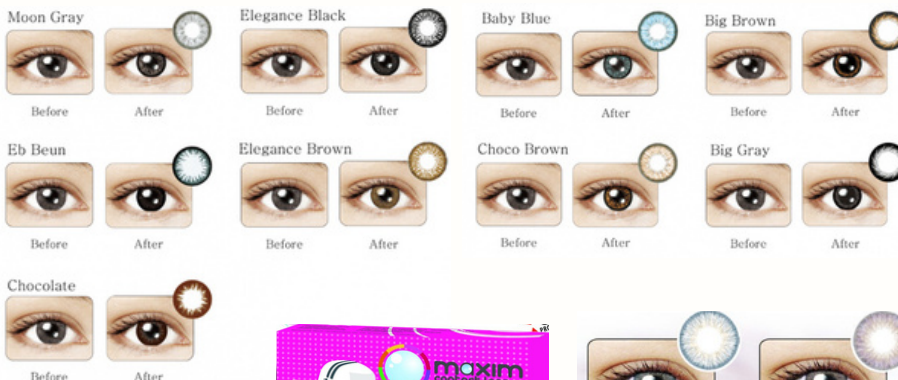
Maxim Blue
Hazel / Gray / Cocoa / Blue / Kiwi / Violet / P.Brown / P.Blue / P.Gray / P.Gold

URP: \$24
CR: \$18



Maxim Orange
Chocolate / EB-Beun / Baby Blue / Choco Brown / Moon Gray / Big Brown / Big Gray / E.Brown / E.Black

URP: \$30
CR: \$22



Maxim Violet
Natural Brown / Natural Gray

URP: \$20
CR: \$15

Natural Gray

Natural Brown



Maxim Pink
French Olive / French Hazel / French Gray / French Trio Gray / French Trio Brown

URP: \$25
CR: \$18



URP: Usual Retail Price
CR: Corporate Rate

OCULUS

FreshKon Colors Fusion



Available in 1 day (30pc) and Monthly lenses:
Blushing Violet / Brilliant Brown / Shimmering Grey

Available in Monthly lenses only:
Cool Green / Gleaming Green / Glinting Brown / Glittering Blue / Groovy Green / Hippie Chestnut / Misty Grey / Perky Brown / Shimmering Grey / Warm Hazel



1 Day	Monthly (2pc)
URP:	URP: \$26
\$58 (30pc)	CR: \$19

FreshKon Colors Fusion - Moondust



Available in Monthly lenses only:
Moondust Green / Moondust Blue / Moondust Gold / Moondust Brown / Moondust Hazel / Moondust Grey

Available in 1 day (10pc) lenses only:
Moondust Aqua / Moondust Honey / Moondust Silver / Moondust Bronze



1 Day	Monthly (2pc)
URP:	URP: \$26
\$25 (10pc)	CR: \$19

FreshKon Alluring Eyes



Available in 1 day (30pc) and Monthly lenses:
Winsome Brown / Magnetic Grey / Mystical Black / Majestic Brown



1 Day	Monthly (2pc)
URP:	URP: \$31
\$58 (30pc)	CR: \$21

FreshKon Alluring Eyes - Maschera



Available in Monthly lenses:
Maschera Rose / Maschera Jade / Maschera Crystal / Maschera Brown

Available in 1 day (30pc) lenses:
Maschera Mauve / Maschera Azure / Maschera Honey / Maschera Emerald / Maschera Mocha / Maschera Satin

1 Day	Monthly (2pc)
URP:	URP: \$31
\$58 (30pc)	CR: \$21

VTI



NaturalVue Multifocal 1 Day
URP: \$80
CR: \$65

URP: Usual Retail Price
CR: Corporate Rate

OCULUS

Monthly lenses (2pc)

			
Amis Graphite	Amis Cedar	Envi Pebble	Envi Fog
			
Ombre Caramel	Ombre Smoke	Café Flat White	Café Long Black
		Value Pack (2pc) URP: \$31 CR: \$22	
Flora Snapdragon	Flora Heather		

1 Day lenses

			
Amis Brunette	Amis Stone		
			
Aelin Mocha	Aelin Slate	Ombre Fossil	Ombre Walnut
			
Flora Daisy	Flora Calla Lily	Crystal Halo	Dreamy Halo

10-PC Pack
URP: \$25
CR: \$21

30-PC Pack
URP: \$58
CR: \$42

GEOLICA

Daily Disposables (10 pc per box)

					
Bluey Gray		Yellowy Brown		Pinkiolet	
1-day eyeeniq URP: \$25 Bluey Gray/ Yellowy Brown/ Pinkiolet CR: \$18					

Monthly Disposables (2pc)

					Geolica Eyevelyn Eyevelyn Brown SI-B24 URP: \$30 Eyevelyn Choco SI-A27 CR: \$20
EYEVELYN CHOCO SI-A27		EYEVELYN BROWN SI-B24			



Holicat

Funky Cat - Blue / Sexy Cat - Grey / Cutie Cat - Brown / Barbie Cat - Hazel / Choco / Lovely Cat - Hazel

URP: \$25
CR: \$16



Cafe Mimi

Blueberry Cake WMM-700 (Plano Only)
Cappuccino WMM-600
Espresso WMM-500
Macchiato WMM-504
Waffle WMM-505
Latte WMM-506

URP: \$25
CR: \$16



Cafe Mimi

Almond Brown XMM-204
Starmish Brown XKP-304
Starmish Black XKP-100
Apple Green WMM-303
Sesame Grey WMM-305
Chocolate Brown WMM-304

URP: \$25
CR: \$16

